

# Buffalo Cemetery – Valley Township Addition

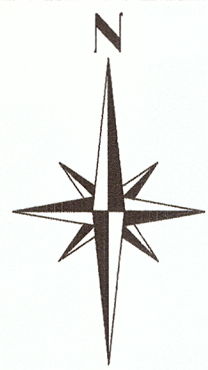
## Valley Township Trustees

### NW Quarter Section 3 T8 R9

#### Valley Township Guernsey County Ohio

Scale 1" = 20' Aug 12 2011

Instrument 20110004912 OR Book Page 480 3017



Based on the grid meridian Ohio State Plane South Coordinate Zone as determined by GPS observations

Ref: 575°14'06"W 457.21'

Ref: S14°02'33"W 821.88'

Valley Township Board of Trustees OR 473 – 1230

Valley Township Board of Trustees OR 473 – 1230

Ref: N28°09'36"E 271.23'

S88°39'14"E 291.00'

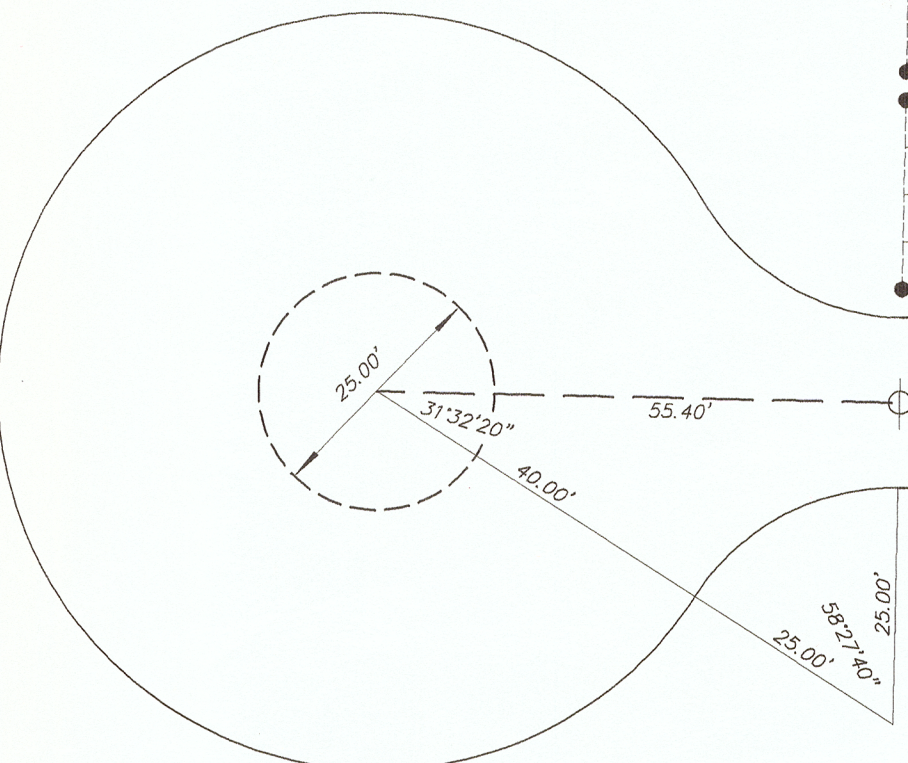
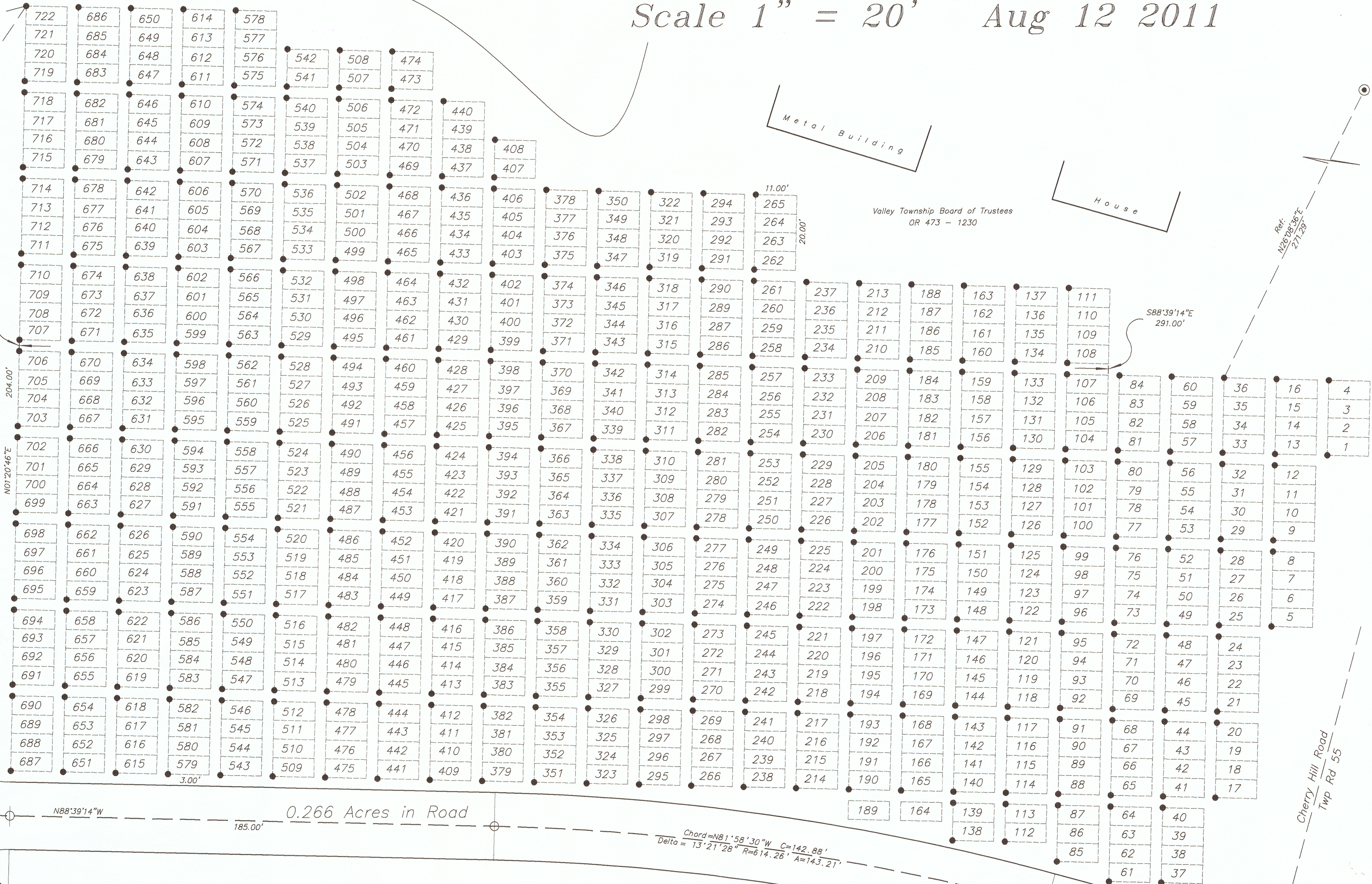
S88°39'14"E 291.00'

**Legend:**

- 3/4" X 24" Rebar Set with Lot Numbered Aluminum Cap
- 5/8" Rebar Set Capped GARDNER
- ⊙ 5/8" Rebar Found Capped HUNNELL

**Notes:**

The western lot block corners are monumented with 3/4" X 24" iron bars capped with lot numbered aluminum caps  
 Centerline of road is monumented with buried 5/8" X 30" rebars capped "Gardner PS 6884"  
 Individual Lots are 11' X 5' – Walkways are 3'  
 Reference ties are shown to existing property monuments



0.266 Acres in Road

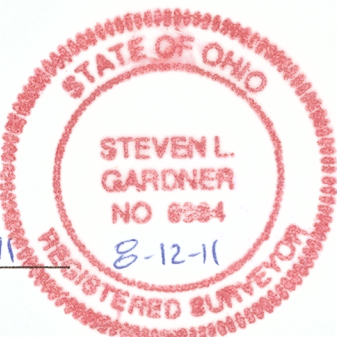
Valley Township Board of Trustees OR 473 – 1230

20110004912  
 Filed for Record in  
 GUERNSEY COUNTY, OHIO  
 COLLEEN WHEATLEY, RECORDER  
 08-30-2011 At 11:52 am.  
 PLAT 40.00  
 OR Book 480 Page 3017 – 3017

**DEDICATION AND ACKNOWLEDGEMENT:**

We the undersigned, Valley Township Trustees, Trustees of the real estate shown, hereby certify that we have caused the same to be surveyed and platted into 722 lots and road as shown and that said lots are numbered as shown and are hereby dedicated for use as cemetery lots.

Valley Township Trustee *Delbert Abrams* Delbert Abrams Date: August 30, 2011  
 Valley Township Trustee *Craig Kackley* Craig Kackley Date: August 30, 2011  
 Valley Township Trustee *Terry Williams* Terry Williams Date: Aug 30, 2011



**CERTIFICATE OF SURVEYOR:**

I hereby certify that at the direction of The Valley Township Trustees, Trustees of the real estate shown I surveyed and platted 722 Lots into cemetery lots and road as shown. Said lots have been numbered as shown and the foregoing real estate has been named Buffalo Cemetery – Valley Township Addition and the linear dimensions are given in feet and bearings are in degrees, minutes and seconds. Monuments are placed as shown for the regulation of future surveys.

Steven L Gardner – PS 6884 *[Signature]* Date 8-12-11



**Gardner Surveying**  
 60707 Stewart Rd.  
 Cambridge, Ohio 43725  
 Steven L. Gardner PS 6884  
 740-432-5369

Scale: 1" = 20'  
 File: 01617.msz  
 File: 01617.dwg

Job#: 2111617  
 Date: Aug 12 2011  
 Revised: